

ENTERTAINMENT

Product Solution Guide

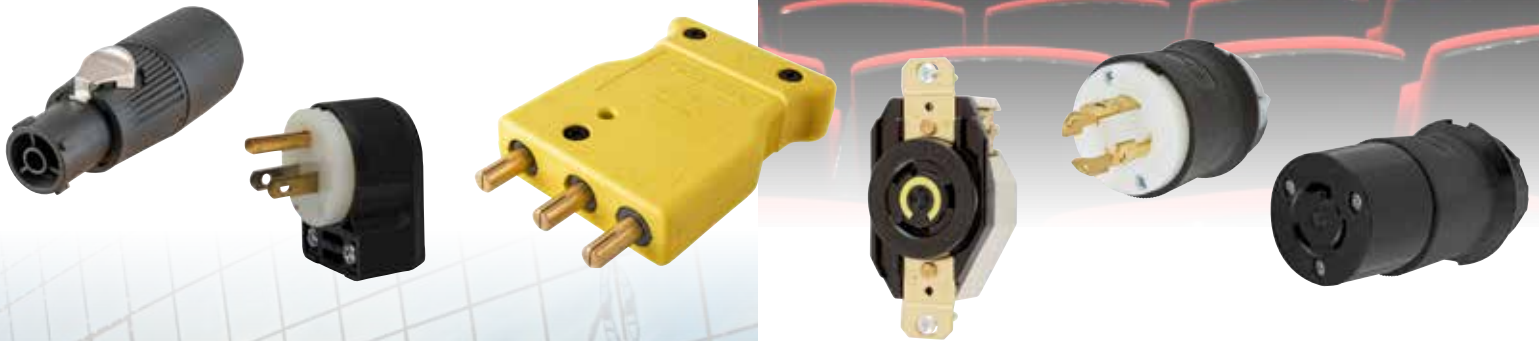


At Hubbell, we're never satisfied— but our customers always are.

Hubbell Wiring Device-Kellems products have long set the standard for innovation, performance, durability, convenience and safety. There's an underlying secret to our continuing success. It's our philosophy of never leaving well enough alone.

We believe we can always make our products better—and the record shows we have.

The dynamic environments faced by the entertainment industry are unpredictable, and therefore place high demands on all of your equipment. Hubbell devices have the proven reliability to deliver secure connections that let you turn your attention to the critical details for a flawless show, no matter what the venue.



We offer products tailored to the entertainment industry's requirements for durability, aesthetics and safety. All black plugs and connectors seamlessly blend into the background. Series 15, 16 and 18 single pole devices with a double cam stand up to repeated mating. Angled plugs from 15 to 60 amps fit into the tight spaces where cable management is a more critical issue. All of these products are designed with the overall quality that can take on the harsh, everyday abuse unique to producing a show.

Safety is always a top priority. All Hubbell products are designed and manufactured with this in mind, and exceed UL standards so the show can go on.

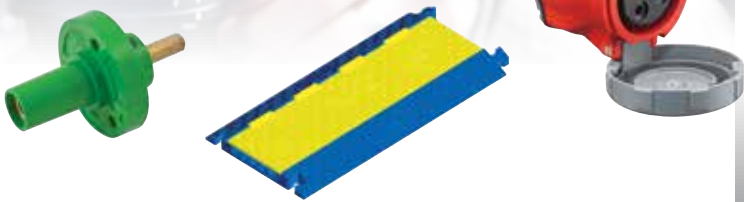
Since our company was founded more than 125 years ago, Hubbell Wiring Device-Kellems has been the standard in the entertainment industry. We pride ourselves with the quality and detail built into every product we make.





Table of Contents

- Stage Pin Devices 4
- Asset Monitoring 6
- Straight Blade Devices 8
- Insul-Lock® 9
- Twist-Lock® Devices 10
- Single Pole Devices 12
- Pin and Sleeve Devices 14
- Watertight Devices 15
- Hose and Cable Protection Systems 16
- Wire Management 17
- Straight Blade Receptacles and USB Devices 18
- Portable GFCI and Temporary Power Boxes 19



Flexible | Safe | Rugged | Reliable



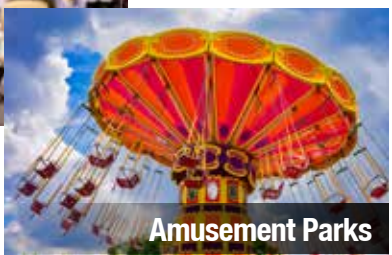
Athletic Facilities



Performing Arts



Studio & Television



Amusement Parks



Asset Monitoring



Hubbell's RFID enabled wiring devices allow owners to quickly and easily scan an entire container without having to handle Individual cable sets.

The unique RFID technology is incredibly powerful and accurate. As well, it is integral to the wiring device so it can't easily fall off or be removed.

Combined with a software solution, integration into inventory management systems is seamless.

Securely Manage and Control Assets with Ease

- Industrial duty, molded-in RFID tags can be retrofitted to existing wiring devices
- Utilizing fixed or portable reader options, RFID tags are powerful enough to read through full baskets of cable and track specific attributes (color and cable length) per asset
- Tags cannot fall off or be easily removed
- Customized to facility requirements and seamlessly integrates data to inventory management programs
- Software package available



RFID Tags are Available as a Cord Clamp Kit for Straight Blade, Twist-Lock® and Pin & Sleeve Devices

- Series 16 Single Pole inline devices (complete device)
- 15A Insulgrip Straight Blade or Twist-Lock® (cord clamp kit)
- 20A, 30A and 50A Insulgrip Twist-Lock® (cord clamp kit)
- 60A Pin & Sleeve (cord clamp kit)
- 100A Pin & Sleeve (cord clamp kit)



**Insulgrip® Cord Clamp Kits
Straight Blade or Twist-Lock®**

Description	Color	Catalog Number
15A & 20A Straight Blade 15A Twist-Lock®	Natural	HBLRFKIT1
3 Wire Twist-Lock®	Natural	HBLRFKIT2
	Blue	HBLRFKIT2BL
	Green	HBLRFKIT2GN
4 & 5 Wire Twist-Lock®	Brown	HBLRFKIT2BN
	Natural	HBLRFKIT3
	Blue	HBLRFKIT3BL
	Green	HBLRFKIT3GN
	Brown	HBLRFKIT3BN
50 Amp Cord Clamp	Orange	HBLRFKIT3O
	Natural	CSRFKIT



Colored Cord Clamps available for visible cable length or phase identification

**Pin and Sleeve Cord Clamp Kits*
60 & 100 Amp**

60 Amp Kit	100 Amp Kit
HBL60RFKIT	HBL100RFKIT

*Note: *Kits will include cord clamps, screws and inserts where applicable.*



**Single Pole
Series 16 Inlines**

Description	Color	Male	Female
300A	Black	HBLRF300MBK	HBLRF300FBK
	White	HBLRF300MW	HBLRF300FW
	Green	HBLRF300MGN	HBLRF300FGN
	Blue	HBLRF300MBL	HBLRF300FBL
	Red	HBLRF300MR	HBLRF300FR
	Brown	HBLRF300MBN	HBLRF300FBN
	Orange	HBLRF300MO	HBLRF300FO
	Yellow	HBLRF300MY	HBLRF300FY
	400A	Black	HBLRF400MBK
White		HBLRF400MW	HBLRF400FW
Green		HBLRF400MGN	HBLRF400FGN
Blue		HBLRF400MBL	HBLRF400FBL
Red		HBLRF400MR	HBLRF400FR
Brown		HBLRF400MBN	HBLRF400FBN
Orange		HBLRF400MO	HBLRF400FO
Yellow		HBLRF400MY	HBLRF400FY

Single Pole Replacement Bodies

Description	Color	Male	Female
RFID replacement bodies	Black	HBLRFMBBK	HBLRFFBBK
	White	HBLRFMBW	HBLRFFBW
	Green	HBLRFMBGN	HBLRFFBGN
	Blue	HBLRFMBBL	HBLRFFBBL
	Red	HBLRFMBR	HBLRFFBR
	Brown	HBLRFMBBN	HBLRFFBBN
	Orange	HBLRFMBO	HBLRFFBO
	Yellow	HBLRFMBY	HBLRFFBY

TracerPlus
Mobile Data Collection



PTS, Portable Technology Solutions offer both portable and fixed RFID tracking systems to give the user the ability to track and manage asset tags. Data collection can be extended to integration software or existing customer databases.

Kristin Comeau
Portable Technology Solutions
(631) 727-8084 ext. 517
kcomeau@tracerplus.com
www.ptsmobile.com

Ref document # WLFIC002PTS



Straight Blade Devices



Straight Blade Devices

- Durable, impact and chemical-resistant nylon construction ensures reliability
- Integral VARI-SIZE® insert accommodates a wide range of cord diameters (.23 to .72 in.)
- Visible catalog number while in use offers easy identification
- All black EBK versions have a large cord clamp to close flush on 10/3 cords



Flanged Inlets and Receptacles

- Equipment mounting flanges fit flush on panel surfaces
- All nylon construction resists stress cracking and breakage
- Fits with weatherproof covers



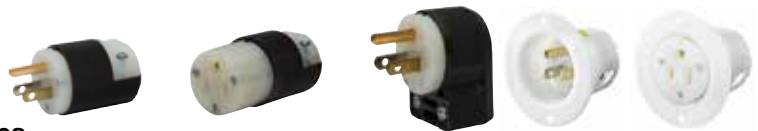
Safety and Durability

Hubbell straight blade devices maintain reliable power connections to prevent performance interruptions. They are the industry standard for all types of entertainment applications, from cord sets to cases to panel mounting.



All Black Straight Blade Devices

Amps	Volts	NEMA Code#	Poles/Wires	AC HP Rating	Heavy Duty Plug		Connector Body	
					All Black	EBK	All Black	EBK
15	125V	L5-15	2P/3W	0.5	HBL5266CM2	HBL5266EBK	HBL5269CM2	HBL5269EBK
20	125V	L5-20		1	HBL5366CM2	HBL5366EBK	HBL5369CM2	HBL5369EBK



Straight Blade Devices

Amps	Volts	NEMA Code#	Poles/Wires	AC HP Rating	Heavy Duty Plug	Connector Body	8-Position Angle Plug	Flanged Inlet	Flanged Receptacle
					Black/White	Black/White			
15	125V	L5-15	2P/3W	0.5	HBL5266C	HBL5269C	HBL5266CA	HBL5278C	HBL5279C
20	125V	L5-20		1	HBL5366C	HBL5369C	HBL5366CA	HBL5378C	HBL5379C



Straight Blade Colored Cord Clamps*



Description	Color	Catalog Number
For use with 15A and 20A, 2 pole/3 wire, insulgrrip plugs and connectors with cord diameter range of .230"-.720" (5.8-18.3) only.	Blue	HBLCORDCLAMPBL
	Green	HBLCORDCLAMPGN
	Orange	HBLCORDCLAMPOR
	Purple	HBLCORDCLAMPPP
	Red	HBLCORDCLAMPR
	Yellow	HBLCORDCLAMPY

Note: *Clamp only. Contains no screws. Order in increments of 10. Not UL Listed or CSA Certified.



For a complete listing of Hubbell products, please see our full line catalog.

Miniature Power Connections for Entertainment Applications



Insul-Lock™ Plus Connectors

- 20A, 250V AC rated
- Rated for disconnect under load
- IP65 rated
- UL 50E Type 4 rated when used with weatherproof covers
- Connectors accept up to 12/3 AWG SO cable which meets NEC 520.68 requirements for extra-hard usage cords or cables
- Panel mount devices accept commonly available .25" spade style connectors
- Industry standard mating, interchangeable with installed base

Insul-Lock™ Plus Connectors

Description	Male Connector Power In	Female Connector Power Out
Locking cable connector, screw terminals	HBLMC	HBLFC

Insul-Lock™ Plus Panel Mounts

Description	Inlet	Outlet
¼" tab terminations with divider	HBLMPD	HBLFPD
Screw termination with divider	HBLMPDS	HBLFPDS
¼" tab terminations, without divider	HBLMP	HBLFP
Inlet-outlet combination, ¼" tab terminations, divided	HBLMFDP	

Insul-Lock™ Plus Accessories

Description	Inlet	Outlet
Spring loaded weatherproof cover	HBLMPC	HBLFPC
Dust protection cap	HBLMPDC	HBLFPDC
Spring loaded weatherproof cover, inlet-outlet combination	HBLMFPC	
Dust protection cap, inlet-outlet combination	HBLMFPDC	



Ideal for use with LED lighting and other applications including multiple screen video walls. The rear of the connector is black to blend in when used in visible areas.

Insul-Lock™ Connectors

- 25A, 250V rated
- Connectors accept up to 12/3 AWG SO cable Meets NEC 520.68 requirements for extra-hard usage cords or cables.
- Color coded blue for power in and gray for power out
- Panel mount devices accept commonly available .25" spade style connectors. Simplifies installation for domestic OEM's
- Industry standard mating Interchangeable with installed base
- Impact-resistant thermoplastic construction. Suitable for use in UL1640 applications



Inline Connectors

Amps	Power In (Blue)	Power Out (Gray)
25 Amp	HBLCPIBL	HBLCPOGY

25 Amp Panel Mounts

Style	Power In (Blue)	Power Out (Gray)
Standard	HBLPMIBL	HBLPMOgy
Divided	HBLPMIDBL	HBLPMODGY

Accessories

Description	Catalog Number
Panel mount retainer plate	HBLPMRP
Panel mount M3x.5 screw, 8mm long	HBLPMSC



Twist-Lock® Devices



The Hubbell Twist-Lock® Tester is an exclusive patented design that easily tests the circuit condition without the need for traditional measurement techniques. Knowing that power is present at any receptacle or connector is critical. An LED output will immediately provide the status of the circuit.



Only Hubbell Makes Twist-Lock® Devices

- Superior cord grip design protects terminations from excess strain
- High performance, reliable terminations for maintaining trouble free connections
- High-impact nylon construction with voltage color-coding resists abuse and facilitates easy identification
- All black EBK versions have a large cord clamp to close flush on 10/3 cords



Flanged Inlets and Receptacles

- Provides versatile mounting for a wide range of applications
- Fits with weatherproof covers for wet and damp locations



Twist-Lock® Circuit Testers

- Developed specifically for entertainment techs, quickly diagnose a miswired situation or application
- Great for dark, difficult to reach spaces
- No measurement readings to interpret



Twist-Lock® Circuit Testers



Description	Rating	20 Amp	30 Amp
3-Phase Circuit Tester	3Ø 120/208V AC Min. Voltage: 90V AC	NEMA L21-20P	NEMA L21-30P
		HBLT3PT2511	HBLT3PT2811
Circuit Tester	125V	NEMA L5-20P	NEMA L5-30P
		HBLT2311	HBLT2611 HBLT26CM11 (Marine)
		250V	NEMA L6-20P
	HBLT2321	HBLT2621	
	277V	NEMA L7-20P	
	HBLT2331		
125/250V	NEMA L14-20P	NEMA L14-30P	
	HBLT2411	HBLT2711	
347V	NEMA L24-20P		
	HBLT3721		



Note: Testers in other NEMA configurations can be developed upon request.

Twist-Lock® Colored Cord Clamps*



Description	Color	For 3 Wire Devices	For 4 & 5 Wire Devices
For use with 20A and 30A Insulgrip® Twist-Lock® Plugs and Connectors. Cord diameter: 3 wire .350"-.930" (9-24), 4 & 5 wire .350" - 1.150" (9-29)	Black	HBLT2CCBK	HBLT3CCBK
	Blue	HBLT2CCBL	HBLT3CCBL
	Brown	HBLT2CCBR	HBLT3CCBR
	Green	HBLT2CCGR	HBLT3CCGR
	Orange	HBLT2CCOR	HBLT3CCOR
	Teal	HBLT2CCTL	HBLT3CCTL
	Dark Blue	HBLT2CCDB	HBLT3CCDB
	White	HBLT2CCWH	HBLT3CCWH
	Yellow	HBLT2CCYL	HBLT3CCYL
	Red	HBLT2CCRD	HBLT3CCRD

Note: *Clamp only. Contains no screws. Order in increments of 10. Not UL Listed or CSA Certified.



For a complete listing of Hubbell products, please see our full line catalog.

Only Hubbell Makes Twist-Lock® Devices



**All Black and EBK
Twist-Lock® Devices**

NEMA Rating Color Coded by		NEMA Code #	Poles/ Wires	AC HP Rating	Plug		Connector Body	
Amps	Voltage				All Black	All Black EBK	All Black	All Black EBK
15	125V	L5-15	2P/ 3W	0.5	HBL4720CBK		HBL4729CBK	
20	125V	L5-20		1	HBL2311BK	HBL2311EBK	HBL2313BK	HBL2313EBK
	250V	L6-20	2	HBL2321BK	HBL2321EBK	HBL2323BK	HBL2323EBK	
30	125V	L5-30	2			HBL2613BK		
	250V	L6-30			HBL2621BK	HBL2621EBK	HBL2623BK	HBL2623EBK
20	125/250V	L14-20	3P/ 4W	2 (1)	HBL2411BK		HBL2413BK	
30	125/250V	L14-30		2	HBL2711BK		HBL2713BK	
20	3ØY 120/208V AC	L21-20	4P/ 5W	2	HBL2511BK		HBL2513BK	
30	3ØY 120/208V AC	L21-30		3	HBL2811BK		HBL2813BK	



Twist-Lock® Devices

NEMA Rating Color Coded by		NEMA Code #	Poles/ Wires	AC HP Rating	Plug	Connector Body	Receptacle	Flanged Receptacle	Flanged Inlet
Amps	Voltage				Black/White	Black/White			
15	125V	L5-15	2P/ 3W	0.5	HBL4720C	HBL4729C	HBL4710	HBL4715C	HBL4716C
	250V	L6-15		1.5	HBL4570C	HBL4579C	HBL4560	HBL4585C	HBL4586C
20	125V	L5-20	2P/ 3W	1	HBL2311	HBL2313	HBL2310	HBL2316	HBL2315
	250V	L6-20		2	HBL2321	HBL2323	HBL2320	HBL2326	HBL2325
	480V AC	L8-20		3	HBL2341	HBL2343	HBL2340	HBL2346	HBL2345
	125V	L5-30		2	HBL2611	HBL2613	HBL2610	HBL2616	HBL2615
30	250V	L6-30	2		HBL2621	HBL2623	HBL2620	HBL2626	HBL2625
	480V AC	L8-30		5	HBL2641	HBL2643	HBL2640	HBL2646	HBL2645
	125/250V	L14-20		2 (1)	HBL2411	HBL2413	HBL2410	HBL2416	HBL2415
20	3Ø 250V AC	L15-20	3P/ 4W	3	HBL2421	HBL2423	HBL2420	HBL2426	HBL2425
	3Ø 480V AC	L16-20		5	HBL2431	HBL2433	HBL2430	HBL2436	HBL2435
	125/250V	L14-30		2	HBL2711	HBL2713	HBL2710	HBL2716	HBL2715
30	3Ø 250V AC	L15-30	3		HBL2721	HBL2723	HBL2720	HBL2726	HBL2725
	3Ø 480V AC	L16-30		10	HBL2731	HBL2733	HBL2730	HBL2736	HBL2735
	3ØY 120/208V AC	L21-20		2	HBL2511	HBL2513	HBL2510	HBL2516	HBL2515
20	3ØY 277/480V AC	L22-20	4P/ 5W	5	HBL2521	HBL2523	HBL2520	HBL2526	HBL2525
	3ØY 120/208V AC	L21-30		3	HBL2811	HBL2813	HBL2810	HBL2816	HBL2815
30	3ØY 277/480V AC	L22-30	10	HBL2821	HBL2823	HBL2820	HBL2826	HBL2825	

Non-NEMA Devices

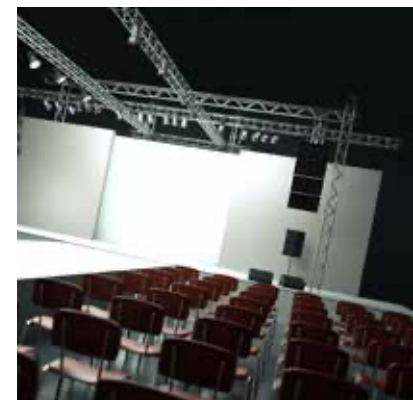
20	20A 250V 10A 600V AC		4P/ 5W		HBL3521C	HBL3523C	HBL3520	HBL3525C	HBL3524C
----	-------------------------	--	-----------	--	-----------------	-----------------	----------------	-----------------	-----------------

50 Amp Devices

50	125/250V AC		3P/ 4W		CS6365C	CS6364C	CS6369		CS6375
----	-------------	--	-----------	--	----------------	----------------	---------------	--	---------------



Designed for the Entertainment Industry, Hubbell's all black Insulgrip wiring devices offer the same reliability as the black and white versions, meeting requirements for durability, aesthetics and safety. All black plugs and connectors blend into the background, keeping the focus on the entertainment, and not the wiring.



Single Pole



Single pole devices are the right choice for supplying temporary electrical power distribution for entertainment, theme parks, carnival equipment, concerts, movie making and numerous other applications requiring temporary power.

Single pole devices have been designed with ease of assembly and disassembly in mind; no special tools are required.



Single Pole Devices - Series 15

150 Amp, 600V AC

- Enclosure Types 3R, 4X, 12
- Combo head, non-metallic safety retaining screw
- Insulgrip body design
- Accepts 8 AWG - 2 AWG wire
- Colors available: black, blue, brown, green, gray, orange, red, white and yellow
- UL and cULus Listed



150 Amp, Inlines



Description	Male	Female
Thermoplastic elastomer, cable size #8 - #2 AWG	HBL15Mxx	HBL15Fxx

150 Amp, Receptacles, Stud Type 1/16" x 3/4"



Description	Female	Male
Thermoplastic, panel mount	HBL15FRSxx	HBL15MRSxx

Tees



Description	Tapping Tee	Paralleling Tee
Fits 150 amp inlines and receptacles	HBL15Txx	HBL15PTxx

150 Amp, Receptacles, Double Set Screw



Description	Female	Male
Thermoplastic, cable size #8 - #2 AWG	HBL15FRxx	HBL15MRxx

Gender Reversing Devices



Description	Double Male	Double Female
Fits 150 amp inlines and receptacles	HBL15DMxx	HBL15DFxx

Protective Caps



Description	Fits Male Devices	Fits Female Devices
Fits 150 amp inlines and receptacles	HBL15MCAPxx	HBL15FCAPxx
Fits 300/400 amp inlines and receptacles	HBLMCAPxx	HBLFCAPxx

xx=color: **BK** (Black), **W** (White), **GN** (Green), **R** (Red), **BL** (Blue), **BN** (Brown), **O** (Orange), **Y** (Yellow), **GY** (Gray).

Weather Protective Covers



Description	Catalog Number
Use with 150 amp stud type or double set screw receptacles	HBL15NCxx
Use with 300/400 amp stud type or double set screw receptacles	HBLNCxx HBLNCAXx

xx=color: **BK** (Black), **W** (White), **GN** (Green), **R** (Red), **BL** (Blue), **BN** (Brown), **O** (Orange), **Y** (Yellow), **GY** (Gray) and **C** (Clear).

Gender Reversing Devices



Description	Double Male	Double Female
Fits 300 and 400 amp inlines and receptacles	HBLDMxx	HBLDFxx

Tees



Description	Paralleling Tee
Tapping Tee Fem-Fem-Male	HBLTxx
	HBLPTxx

3-Fers



Description	Male-Fem-Fem-Fem	Fem-Male-Male-Male	Soft 3-Fers
Fits 300 and 400 amp inlines and receptacles	HBLM3Fxx	HBLF3Mxx	HBLM3FSBK HBLF3MSGN

Distribution Block



1 Male, 6 Females	HBL7DBxx
-------------------	-----------------

xx=color: **BK** (Black), **W** (White), **GN** (Green), **R** (Red), **BL** (Blue), **BN** (Brown), **O** (Orange) and **Y** (Yellow).



For a complete listing of Hubbell products, please see our full line catalog.

Single Pole Devices - Series 16 & 18

300 and 400 Amp, 600V AC

- Enclosure Types 3R, 4X, 12
- Non-metallic safety retaining screw
- Insulgrip body design
- Accepts 6 AWG - 4/0 wire
- Colors available: black, blue, brown, green, gray, orange, red, white and yellow
- UL and cUL Listed



300 & 400 Amp, Inlines



Description	Male Plug	Female Plug
Series 16 300 amp, thermoplastic elastomer, cable size #6 - 2/0 AWG	HBL300Mxx	HBL300Fxx
Series 16 400 amp, thermoplastic elastomer, cable size 2/0 - 4/0 AWG	HBL400Mxx	HBL400Fxx
Series 18 300 amp, thermoplastic elastomer, cable size #2 - 2/0 AWG	HBL18300Mxx	HBL18300Fxx
Series 18 400 amp, thermoplastic elastomer, cable size 3/0 - 4/0 AWG	HBL18400Mxx	HBL18400Fxx

Angled Receptacles, Stud Type



Description	Angled Receptacles	
	Female	Male
Panel Mount, thermoplastic elastomer	HBLFRSxx	HBLMRSxx

Receptacles, Stud Type



Description	Through Hole Mounting	
	Female	Male
Panel Mount, thermoplastic elastomer	HBLFRSxx	HBLMRSxx



Description	Threaded Hole Mounting	
	Female	Male
Panel Mount, thermoplastic elastomer	HBLFRSCxx	HBLMRSCxx

Receptacles, Double Set Screw



Description	Through Hole Mounting	
	Female	Male
Panel Mount, thermoplastic elastomer	HBLFRxx	HBLMRxx



Description	Angled Receptacles	
	Female	Male
Panel Mount, thermoplastic elastomer	HBLFRAxx	HBLMRAxx

Receptacles, Bus Bar Mount



Description	Straight Receptacles	
	Female	Male
Panel Mount, thermoplastic elastomer	HBLFRBxx	HBLMRBxx
2-hole bus bar	HBLFRB2xx	HBLMRB2xx



Description	Angled Receptacles	
	Female	Male
Panel Mount, thermoplastic elastomer	HBLFRABxx	HBLMRABxx

Offset Terminals



Description	Straight Style	
	Female	Male
Panel Mount, thermoplastic elastomer	HBLFOSxx	HBLMOSxx



Description	Angled Style	
	Female	Male
Panel Mount, thermoplastic elastomer	HBLFOAxx	HBLMOAxx

xx = Color: **BK** (Black), **BL** (Blue), **BN** (Brown), **GN** (Green), **O** (Orange), **R** (Red), **W** (White) and **Y** (Yellow).



Hubbell's Single Pole connectors are made from a specially formulated thermoplastic elastomer (TPE) that resists cracking in cold, hot or oily conditions as well as any other harmful environments that may be found within the Entertainment Industry.



Pin & Sleeve Wiring Devices



Switch-Rated Advantage™ Series

The Advantage series now includes both a 30A and 60A offering which are the first and only IEC 60309-2 Pin and Sleeve Switch-Rated Devices in the market place.

Once again, Hubbell has brought more advantages to the switch-rated market establishing new benchmarks in both performance and innovation!



IEC Pin and Sleeve

- Provide safe and dependable performance in the most demanding environments
- Heavy duty non-conductive nylon construction provides impact and corrosion protection
- Pin and Sleeve devices are available in configurations from 20A 125V to 100A 600V AC



Advantage™ Series

- Switch-rated connectors established new benchmarks for mechanical and electrical performance
- Compact design device is similar in size to standard IEC 60309-2 devices, receptacles mount to standard Hubbell IEC Pin and Sleeve back boxes
- Spring-loaded disconnect button oversized for easy actuation with gloved hands
- Upgrade to a switch-rated connection: Add an "S" to standard catalog number
HBL430C7W » HBL5430C7W



IEC Pin and Sleeve Type 4X/IP69k

Rating Color Coded by Voltage	Poles/Wires	Plug	Connector	Receptacle
20A 125/250V 20A 3Ø 480V	3P/4W 3P/4W	HBL420P12W HBL420P7W	HBL420C12W HBL420C7W	HBL420R12W HBL420R7W
30A 125/250V 30A 3Ø 480V 30A 3ØY 120/208V	3P/4W 3P/4W 4P/5W	HBL430P12W HBL430P7W HBL530P9W	HBL430C12W HBL430C7W HBL530C9W	HBL430R12W HBL430R7W HBL530R9W
60A 125/250V 60A 3Ø 480V 60A 3ØY 120/208V	3P/4W 3P/4W 4P/5W	HBL460P12W HBL460P7W HBL560P9W	HBL460C12W HBL460C7W HBL560C9W	HBL460R12W HBL460R7W HBL560R9W
100A 125/250V 100A 3Ø 480V 100A 3ØY 120/208V	3P/4W 3P/4W 4P/5W	HBL4100P12W HBL4100P7W HBL5100P9W	HBL4100C12W HBL4100C7W HBL5100C9W	HBL4100R12W HBL4100R7W HBL5100R9W

Convention Center Pin and Sleeve

- Manufactured in a durable light-weight polycarbonate construction to withstand heavy impact
- Mates with existing installed base
- Single device that accepts both round and flat cable



Low Profile Convention Center Pin & Sleeve

Rating Color Coded by Voltage	Poles/Wires	Plug	Connector	Receptacle	Inlet
60A 277/480V	4P/5W	HBL5607P	HBL5607C	HBL5607R	HBL5607B



Watertight Safety-Shroud® Twist-Lock® Devices

- Maintains UL Type 4X watertight seal when in use and when disconnected with use of closure cap
- Safety-Shroud® recessed blades provide protection against bending and breaking for a longer life
- Neoprene sealing gland and thermoplastic guard assure sealing when fully connected



Watertight Devices

- Double insulated elastomeric cover with thermoplastic body for extra safety and water resistance
- NEMA 4, 4X, 6P Rated and IP69k Suitability
- Corrosion-resistant nickel plated blades and stainless steel captive assembly screws



Watertight Safety Shroud Twist-Lock® Devices

NEMA Rating Color Coded by Voltage	Poles/Wires	Plug	Connector	Flanged Inlet	Receptacle
20A 125V	2P/3W	HBL2311SW	HBL2313SW	HBL2315SW	HBL2310SW
20A 250V	2P/3W	HBL2321SW	HBL2323SW	HBL2325SW	HBL2320SW
20A 125/250V AC	3P/4W	HBL2411SW	HBL2413SW	HBL2415SW	HBL2410SW
20A 3Ø 250V	3P/4W	HBL2421SW	HBL2423SW	HBL2425SW	HBL2420SW
20A 3Ø 480V	3P/4W	HBL2431SW	HBL2433SW	HBL2435SW	HBL2430SW
30A 125V	2P/3W	HBL2611SW	HBL2613SW	HBL2615SW	HBL2610SW
30A 250V	2P/3W	HBL2621SW	HBL2623SW	HBL2625SW	HBL2620SW
30A 125/250V	3P/4W	HBL2711SW	HBL2713SW	HBL2715SW	HBL2710SW
30A 3Ø 250V	3P/4W	HBL2721SW	HBL2723SW	HBL2725SW	HBL2720SW
30A 3Ø 480V	3P/4W	HBL2731SW	HBL2733SW	HBL2735SW	HBL2730SW



Watertight Devices

NEMA Rating Color Coded by Voltage	Poles/Wires	Plug		Connector		Receptacle Yellow
		Yellow	Black	Yellow	Black	
15A 125V	2P/3W	HBL24W47A	HBL24W47BK	HBL25W47A	HBL25W47BK	HBL65W47
20A 125V	2P/3W	HBL26W47	HBL26W47BK	HBL27W47	HBL27W47BK	HBL67W47
20A 250V	2P/3W	HBL26W48	HBL26W48BK	HBL27W48	HBL27W48BK	HBL67W48
20A 125/250V AC	3P/4W	HBL26W74	—	HBL27W74	—	HBL67W74
20A 3Ø 250V	3P/4W	HBL26W75	HBL26W75BK	HBL27W75	HBL27W75BK	HBL67W75
20A 3Ø 480V	3P/4W	HBL26W76	HBL26W76BK	HBL27W76	HBL27W76BK	HBL67W76
30A 125V	2P/3W	HBL28W47	HBL28W47BK	HBL29W47	HBL29W47BK	HBL69W47
30A 250V	2P/3W	HBL28W48	—	HBL29W48	—	HBL69W48*
30A 125/250V	3P/4W	HBL28W74	—	HBL29W74	—	HBL69W74
30A 3Ø 250V	3P/4W	HBL28W75	HBL28W75BK	HBL29W75	HBL29W75BK	HBL69W75*
30A 3Ø 480V	3P/4W	HBL28W76	HBL28W76BK	HBL29W76	HBL29W76BK	HBL69W76*

Note: *For black devices add **BK** suffix.



Watertight Safety

When it comes to safety, most everyone knows that water and electricity can create a dangerous environment. Ensuring a watertight seal for electrical devices is critical to ensuring maximum safety of personnel in any wet environment. Hubbell Watertight Twist-Lock® devices have become the industry standard for maintaining a watertight seal.



Hose and Cable Protection Systems



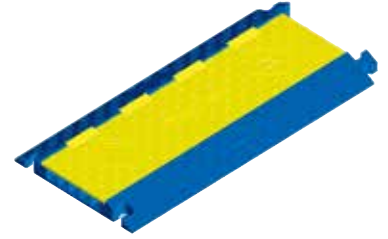
Hubbell's Hose and Cable Protection System is designed to support pedestrian and light vehicle traffic in public, institutional and commercial applications. The Hubbell modular cable protection line also permits compliance with NEC® requirements (Article 525) for insulating electrical cables and cord at carnivals, amusement parks, convention centers and similar public areas.



Hose and Cable Protection Systems

TrukTrak® and TredTrak®

- Safeguards cables and cords from vehicle and pedestrian traffic
- TrukTrak® is ideal for events where trucks and forklifts are present while TredTrak® supports pedestrian and light vehicle traffic in public, institutional and commercial applications
- Complies with NEC® Article 525 for insulating cables at carnivals, amusement parks, convention centers and similar public areas



ProTrak®

- High density polyurethane construction supports heavy loads and is weather resistant
- Modular interlocking design for easy installation, breakdown and storage
- High visibility safety yellow and black traks have a surface pattern reduces slipping and skidding



AccessTrak®

- Modular cable protection for compliance with ADA accessibility guidelines
- Protects cable and hose diameters up to 1.31 inches



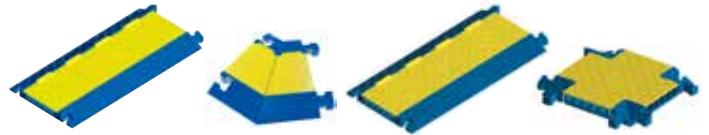
ProTrak™ Systems

Description	Catalog Number
1 Channel, drop over, yellow	PROTRK115Y
1 Channel, drop over, black	PROTRK115BK
1 Channel, drop over, yellow	PROTRK140Y
1 Channel, drop over, black	PROTRK140BK
1 Channel, hinged cover, yellow	PROTRK1225Y
1 Channel, hinged cover, black	PROTRK1225BK



TrukTrak® and TredTrak® Systems

Description	TrukTrak®	TredTrak®
5 Channel, blue and yellow	HBLTT5B	HBLTRED5B
5 Channel end caps (pair only), yellow	HBLTT5ECB	HBLTRED5ECB
5 Channel female end caps (2 females), yellow	—	HBLTRED5ECFB
5 Channel 45° right turn, blue and yellow	HBLTT545RB	—
5 Channel 45° left turn, blue and yellow	HBLTT545LB	—
5 Channel "X" fitting, blue and yellow	—	HBLTRED5XB
5 Channel "Y" fitting, blue and yellow	—	HBLTRED5YB
3 Channel, blue and yellow	HBLTT3B	—
3 Channel end caps (pair only), yellow	HBLTT3ECB	—
2 Channel, blue and yellow	HBLTT2B	—



AccessTrak® System

Description	Catalog Number
5 Channel AccessTrak kit*, blue and gray	HBLAT5KITA
5 Channel AccessTrak trough, blue and gray	HBLAT5A
AccessTrak trough end rails (set), gray	HBLAT5ERA
AccessTrak ramps (set), blue	HBLAT5RAMPA
AccessTrak ramp end rails (set), gray	HBLAT5RAMPERA

Note: *Consists of (1) HBLAT5A; (1 set) HBLAT5ERA; (1 set) HBLAT5RAMPA; (2 sets) HBLRAMPERA.



Expanded by Width



Cord Connectors

- GOTCHA® ring incorporates a split hinge design to prevent friction and provide strain relief
- The connector body is a one-piece design with machined threads that provide a strong positive seal
- A tapered interior seats the bushing evenly for a liquidtight seal



Strain Relief Grips

- Multi-weave grip products provide arc-of-bend control minimizing cable damage and extending cable life
- Ideal for providing maximum safety where conduit is subject to vibration, motion or strain
- Stainless steel mesh is corrosion resistant and optional liquidtight fittings provide a watertight seal



Support Grips

- Ideal for ensuring safety by supporting electrical cable service drops or hoses
- Available in tin-coated bronze or stainless steel, heavy duty, standard and light duty for a variety of applications



Straight Male

NPT Hub Size	Cord Diameter Inches (mm)	Machined Aluminum	Machined Zinc-Plated Steel	Nylon Gray	Nylon Black
1/2	.38"-.50" (9.7-12.7)	SHC1023	SHC1023ZP	SHC1023CR	SHC2023CR
	.50"-.63" (12.7-15.9)	SHC1024	SHC1024ZP	SHC1024CR	SHC2024CR
3/4	.63"-.75" (15.9-19.0)	SHC1037	SHC1037ZP	SHC1037CR	SHC2037CR

Kellems® Deluxe Cord Grips

NPT Thread Size	Grip Diameter Range Inches (cm)	Straight Male Thread	Straight Female Thread	90° Male Thread	45° Male Thread
1/2	.187"-.250" (.47-.63)	07401004	—	07401074	—
	.250"-.375" (.63-.95)	07401006	—	07401076	074011236
	.375"-.500" (.95-1.27)	07401008	07401043	07401078	074011021
	.500"-.625" (1.27-1.59)	07401010	07401045	07401080*	074011237
3/4	.187"-.250" (.47-.63)	07401011	—	—	—
	.250"-.375" (.63-.95)	07401013	—	—	—
	.375"-.500" (.95-1.27)	07401015	—	07401081	—
	.500"-.625" (1.27-1.59)	07401017	07401052	07401083	074011049
	.625"-.750" (1.59-1.90)	07401018	07401053	07401084*	074011051*
	.750"-.875" (1.90-2.22)	074011249*	—	074011275*	074011239*

Note: *Cable jacket may have to be stripped to pass through connector body.

Single Eye, Closed Mesh**

For permanent support when cable end is available to be installed through grip.

Cable Diameter Range Inches (cm)	Approx. Breaking Strength Lbs. (N)	Catalog Number
.50"-.62" (1.27-1.57)	530 (2,357)	02201013
.63"-.74" (1.60-1.88)	790 (3,514)	02201014
.75"-.99" (1.90-2.51)	1,020 (4,537)	02201015
1.00"-1.24" (2.54-3.15)	1,610 (7,161)	02201017
1.25"-1.49" (3.17-3.78)	1,610 (7,161)	02201018
1.50"-1.74" (3.81-4.42)	1,610 (7,161)	02201019

Note: **Change catalog number from 022 to 024 for stainless steel. Consult factory for availability.

Single Eye, Split Mesh, Rod Closing**

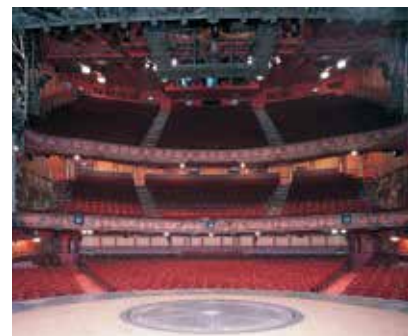
For support when cable end is not available.

Cable Diameter Range Inches (cm)	Approx. Breaking Strength Lbs. (N)	Catalog Number
.50"-.62" (1.27-1.57)	790 (3,514)	02203013
.63"-.74" (1.60-1.88)	790 (3,514)	02203014
.75"-.99" (1.90-2.51)	1,020 (4,537)	02203015
1.00"-1.24" (2.54-3.15)	1,610 (7,161)	02203017
1.25"-1.49" (3.17-3.78)	1,610 (7,161)	02203018
1.50"-1.74" (3.81-4.42)	1,610 (7,161)	02203019



Kellems wire mesh products are available for a wide variety of applications including supporting and strain relief of electrical cords. The wire mesh design provides an even amount of pressure over the length of the grip and prevents the cord from damage and kinking.

The support grip line has multiple eyes for attaching grips to any support structure. The strain relief line of mesh controls arc-of-bend and protects terminations from excessive strain.



Straight Blade Receptacles and USB Devices



HBL® Extra Heavy Duty Compact Industrial Receptacles

- Heavy duty brass mounting strap and impact resistant construction
- Compact device body for installation where space is limited



Hubbell-PRO Industrial Grade Receptacles

- Galvanized steel mounting strap and plated steel terminal screws for corrosion resistance
- Nylon face and base provide impact resistance and durability
- Available in bulk packaging in red, black, and blue versions for high volume assemblers

HBL® Extra Heavy Duty Compact Industrial Receptacles

Color	Receptacles	
	15A	20A
Brown	HBL5252	HBL5352
Black	HBL5252BK	HBL5352BK
Gray	HBL5252GY	HBL5352GY
Ivory	HBL5252I	HBL5352I
Red	HBL5252R	HBL5352R
White	HBL5252W	HBL5352W



Hubbell-PRO Industrial Grade Receptacles

Color	Receptacles	
	15A	20A
Brown	5252AB	5352AB
Black	5252ABLK	5352ABLK
Gray	5252AG	5352AG
Ivory	5252AI	5352AI
Red	5252AR	5352AR
White	5252AW	5352AW



GFCI Safety Code

The combination of GFCI protection and tamper-resistant safety provides an ideal “one-stop” Hubbell solution. Hubbell tamper-resistant GFCI devices also include a weather resistant rating per NEC® 406.9, providing UV and corrosion resistance for harsh, damp applications.

Extra Heavy Duty GFCI Receptacles

- Patented tamper-resistant design limits improper access to energized contacts
- Self test units continually tests and monitors for protection automatically
- No power at device face if reverse wired, eliminating false assumption of protection



AUTOGUARD® Self Test Tamper & Weather Resistant

Color	Receptacles	
	15A	20A
Brown	GF5262SG	GF5362SG
Black	GF5262SGBK	GF5362SGBK
Gray	GF5262SGGY	GF5362SGGY
Ivory	GF5262SGI	GF5362SGI
Red	GF5262SGR	GF5362SGR
White	GF5262SGW	GF5362SGW



Installation Efficiency

- The increase in power to a 5 Amp 5 Volt USB port adds capacity
- The new USB standard Type-C port supports faster mobile device charging
- Compliant with USB BC1.2 battery charging and 3.0 power delivery



USB Charging Receptacles Type-C • Type A&C • Type A

Description	Color	Type-C USB ports	Type A&C USB ports	Type A USB ports
High Power, 5 Amp, 5V DC, 15A 125V	Black	USB15C5BK	USB15AC5BK	USB15A5BK
	Ivory	USB15C5I	USB15AC5I	USB15A5I
	Lt. Almond	USB15C5LA	USB15AC5LA	USB15A5LA
	White	USB15C5W	USB15AC5W	USB15A5W
High Power, 5 Amp, 5V DC, 20A 125V	Black	USB20C5BK	USB20AC5BK	USB20A5BK
	Ivory	USB20C5I	USB20AC5I	USB20A5I
	Lt. Almond	USB20C5LA	USB20AC5LA	USB20A5LA
	White	USB20C5W	USB20AC5W	USB20A5W



USB Charger 4 Port Outlet

Description	Type A 4 USB ports
Four USB Type A, class 2.0 ports, 5 Amp, 5 Volt DC, Style Line® decorator	USB4BK
	USB4I
	USB4LA
	USB4W



Note: See full line catalog for additional colors available.

Portable GFCI Line Cords and Outlets

- Provides a watertight housing for maximum safety in harsh environments
- Available with either automatic and manual set feature to fit the application
- Bright indicator light provides fault confirmation from a distance



Multiple Outlet Portable GFCI

- Ideal for providing safety in applications requiring multiple outlets
- Features gasketed cover to protect outlets not in use
- Ensures safety by interrupting power when leakage to ground is 4 to 6 milliamperes

Circuit Guard® Portable GFCI Line Cords



Description	Length	Automatic	Manual
15A 120V AC GFCI Cord Line	18 in.	GFP4C15A	GFP4C15M
	6 ft.	GFP6C15A	GFP6C15M
	25 ft.	GFP25C15A	GFP25C15M
15A 120V AC w/ Stripped Leads	15 ft.	GFPOEMA	GFPOEMM
20A 120V AC	3 ft.	GFP3C20M	—

Multiple Outlet Portable GFCI



Description	Rating	Catalog Number
4-Outlet, 2-Duplex, Manual Set	15A 120V AC	GFP15M
	20A 120V AC	GFP20M

SPIDER® Temporary Power Distribution

- Ensure maximum safety for outdoor events
- Individual GFCI modules
- Gasketed latching receptacle lift covers
- Replaceable legs



Temporary Power Boxes

Max Rating	Type	Receptacle Rating	Protection Overload/GFI	Receptacle Type	
				Straight Blade	Twist-Lock®
Spider® II 30A, 120/240V AC	(7) Receptacles (1) Twist-Lock®*	20A, 125V 30A, 120/240V	Yes/Yes No/No	SDSB1A	SDTL1A
Spider® II 50A, 120/240V AC	(7) Receptacles (1) Twist-Lock®*	20A, 125V 50A, 125/250V	Yes/Yes No/No	SBSB1A	SBTL1A
Spider® II 60A, 3Ø 120/208V	(6) Receptacles (1) Pin & Sleeve*	20A, 125V 60A, 3ØY, 120/208V	Yes/Yes No/No	SCSB0	SCTL0
Commercial Spider® 50A 120/240V AC	(6) Receptacles (1) Twist-Lock® (1) Twist-Lock®*	20A, 125V 30A, 250V 50A 125/250V	Yes/Yes Yes/No No/No	TPDS	TPDL

*Inlet and outlet.

Cable Sets

Description	50 Amp	60 Amp	50 Amp
50 Ft. cord set for use with Spider II Boxes	SCB50	SCC50	—
50 Ft. cord set for use with Temporary Boxes (TPD Series)	—	—	TPC50



Hubbell's SPIDER® Temporary Power Distribution system incorporates the latest devices for reliably delivering safe, temporary power to a variety of equipment and lighting systems needed for outdoor events.



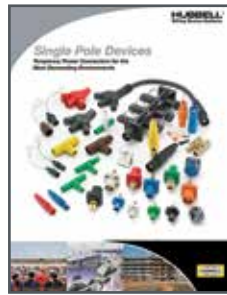
ENTERTAINMENT Product Solution Guide

Online Resources

The Hubbell Wiring Device-Kellems website offers fast and convenient information through our online catalog, technical support, videos and more. Visit www.hubbell.com/wiringdevice-kellems/en.

Literature Support

Hubbell offers an extensive literature library for product support. Downloadable PDFs are available online.



Single Pole Devices

Single Pole devices offer temporary power connections for the most demanding environments.



Watertight Wiring Devices

Straight Blade and Locking watertight devices include plugs, connectors, receptacles and more.



Insulgrip Wiring Devices

Complete brochure for Hubbell's line of Insulgrip products, including Straight Blade, Twist-Lock®, Safety Shroud and Pin and Sleeve wiring devices.



Advantage™ Series Switch-Rated IEC Pin & Sleeve

Advantage™ Series devices are IEC 60309-2 compatible and approved for use as a disconnecting means for motor and branch circuits.



Stage Pin Devices

Hubbell's Stage Pin devices are designed for cool running performance and high impact resistance in very demanding environments.



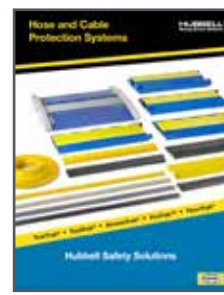
Asset Monitoring Devices

Hubbell's powerful RFID enabled wiring devices allow users to quickly scan large quantities of cable sets at one time.



Twist-Lock® Circuit Testers

Hubbell's Twist-Lock® Circuit Testers easily test the circuit condition without the need for traditional measurement techniques.



Hose and Cable Protection Systems

Hubbell's Hose and Cable protection systems are designed to safeguard cables and cords from vehicle and pedestrian traffic.